


Human CD20 protein, His tag (Animal-Free)

Cat #: PRP2025

Size: 10 µg/50 µg/100 µg/1 mg

Product Information

	Product Name: Human CD20 protein, His tag (Animal-Free)		
REF	Catalog Number: PRP2025	LOT	Lot Number:
	Purity: >95% as determined by SDS-PAGE		
	Storage: Store at -20C		Preparation method: HEK 293 cells
	Shipping: The product is shipped at ambient temperature		

Background: B-lymphocyte antigen CD20 is also known as B-lymphocyte surface antigen B1, Leukocyte surface antigen Leu-16, Membrane-spanning 4-domains subfamily A member 1 and MS4A1, is an activated-glycosylated phosphoprotein expressed on the surface of all B-cells beginning at the pro-B phase (CD45R⁺, CD117⁺) and progressively increasing in concentration until maturity. CD20 is expressed on all stages of B cell development except the first and last; it is present from late pro-B cells through memory cells, but not on either early pro-B cells or plasma blasts and plasma cells. It is found on B-cell lymphomas, hairy cell leukemia, B-cell chronic lymphocytic leukemia, and melanoma cancer stem cells. CD20/MS4A1 may be involved in the regulation of B-cell activation and proliferation. Defects in CD20/MS4A1 are the cause of immunodeficiency common variable type 5 (CVID5). CVID5 is a primary immunodeficiency characterized by antibody deficiency, hypogammaglobulinemia, recurrent bacterial infections and an inability to mount an antibody response to antigen. The defect results from a failure of B-cell differentiation and impaired secretion of immunoglobulins; the numbers of circulating B-cells is usually in the normal range, but can be low.

Sequence: Amino acid sequence derived from human CD20 (NP_068769.2) (Glu213-Pro297) was expressed with a 6 His tag at the C-terminus.

Protein length: The recombinant human consists of 91 amino acids and predicts a molecular mass of 10.6 kDa. It migrates as an approximately 23 kDa band in SDS-PAGE under reducing conditions due to glycosylation.

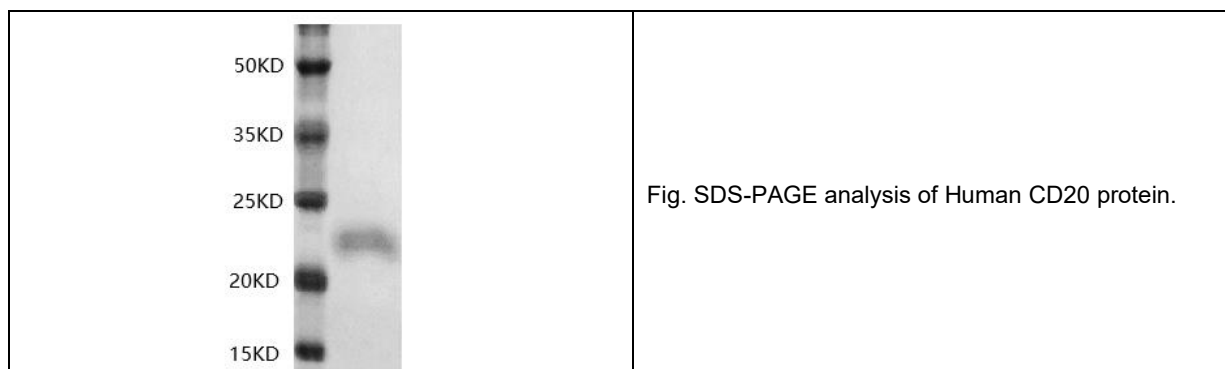
Biological Activity: Testing in progress.

Endotoxin: < 1.0 EU per µg of the protein as determined by the LAL method.

Formulation: Lyophilized from sterile PBS, pH 7.4.

Storage Instructions: Lyophilized Human CD20 protein product should be stored desiccated below -18°C. Upon reconstitution, the protein should be stored at 4°C between 2 -7 days and for future use below -18°C. For long term storage it is recommended to add a carrier protein (0.1% HSA or BSA). Please prevent freeze-thaw cycles.

Usage notes: Always centrifuge tubes before opening. It is recommended to reconstitute the lyophilized Human CD20 protein in sterile ddH₂O not less than 100 µg/ml, which can then be further diluted to other aqueous solutions.



Note: The product listed herein is for research use only and is not intended for use in human or clinical diagnosis. Suggested applications of our products are not recommendations to use our products in violation of any patent or as a license. We cannot be responsible for patent infringements or other violations that may occur with the use of this product.